

Name:

Exam Style Questions

Flow Charts



Corbettmaths

Equipment needed: Calculator, pen

Guidance

1. Read each question carefully before you begin answering it.
2. Check your answers seem right.
3. Always show your workings

Video Tutorial

www.corbettmaths.com/contents

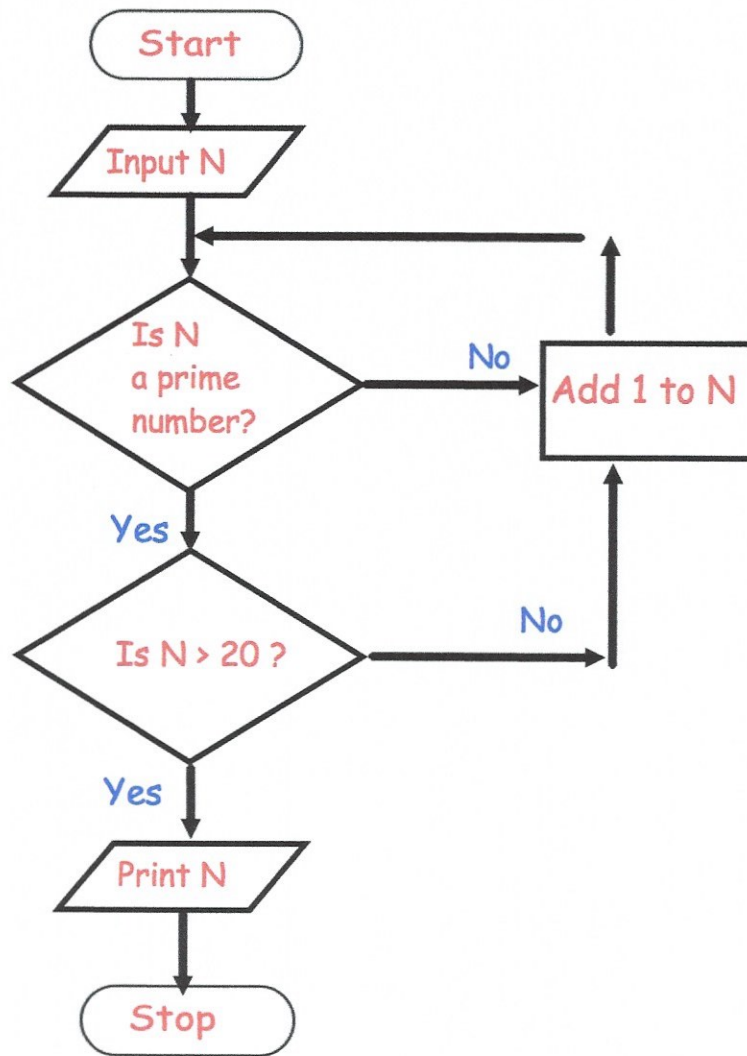
Video 364



Answers and Video Solutions



1.

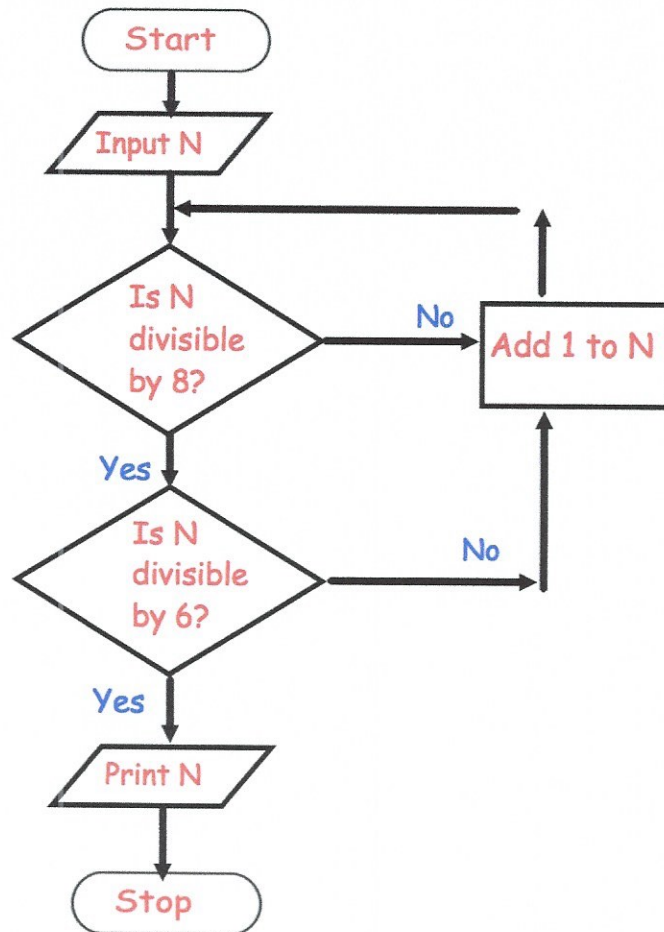


Starting with $N = 15$, use the flow chart to find the number printed.

- 15 x
- 16 x
- 17 x
- 18 x
- 19 x
- 20 x
- 21 x
- 22 x
- 23 ✓

Answer Number Printed = 23 (2)

2.

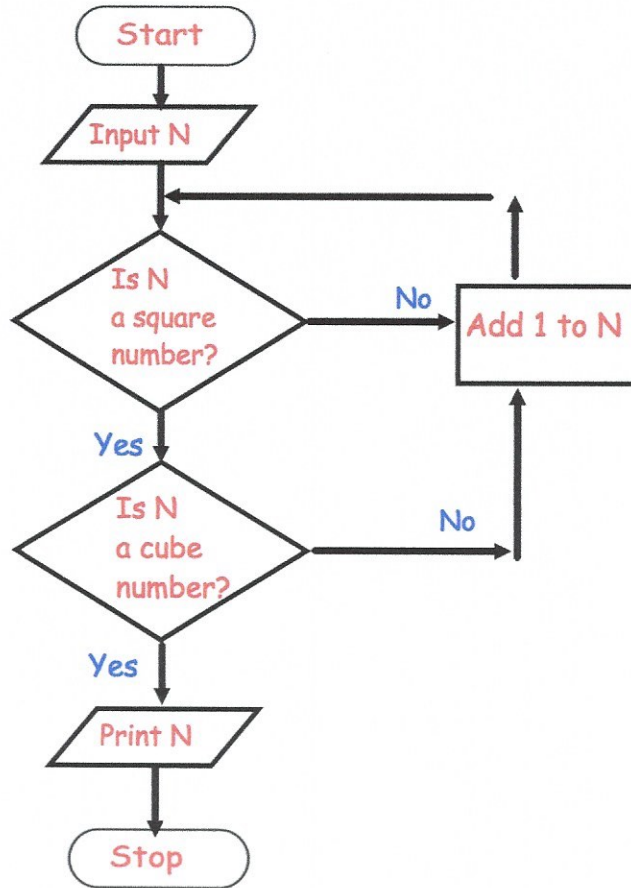


Starting with $N = 30$, use the flow chart to find the number printed.

- | | |
|------|------|
| 30 x | 41 x |
| 31 x | 42 x |
| 32 x | 43 x |
| 33 x | 44 x |
| 34 x | 45 x |
| 35 x | 46 x |
| 36 x | 47 x |
| 37 x | 48 ✓ |
| 38 x | |
| 39 x | |
| 40 x | |

Answer Number Printed =⁴⁸.....
(2)

3.

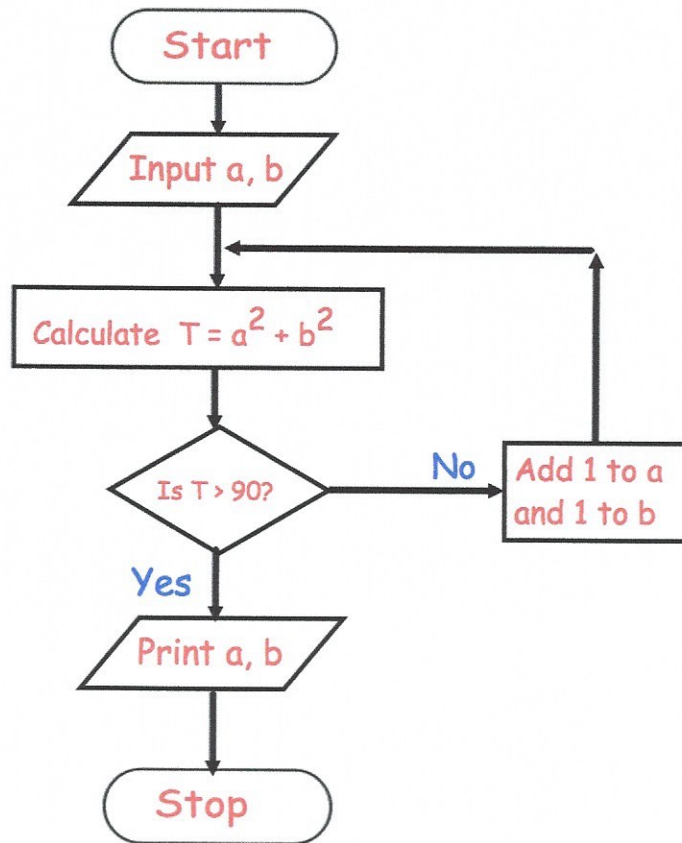


Starting with $N = 20$, use the flow chart to find the number printed.

25 x
36 x
49 x
64 ✓

Answer Number Printed =64.....
(2)

4.

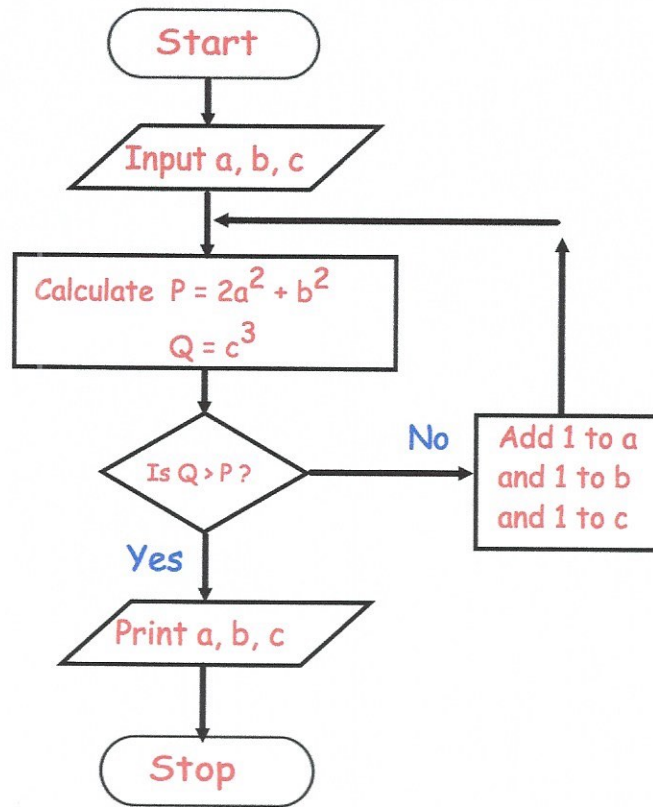


Starting with $a = 3$, $b = 1$ use the flow chart to find the values printed.

a	b	T
3	1	10
4	2	20
5	3	34
6	4	52
7	5	74
8	6	100

Answer $a = \dots 8 \dots$, $b = \dots 6 \dots$
(3)

5.



Starting with $a = 5$, $b = 3$, $c = 1$ use the flow chart to find the values printed.

a	b	c	P	Q
5	3	1	59	1
6	4	2	88	8
7	5	3	123	27
8	6	4	164	64
9	7	5	211	125
10	8	6	264	216
11	9	7	323	343

Answer $a = \dots 11 \dots$, $b = \dots 9 \dots$, $c = \dots 7 \dots$
(3)