

Examples



Click here

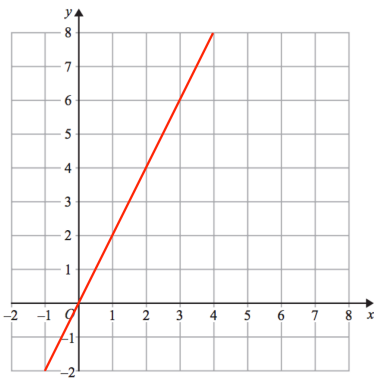


Scan here

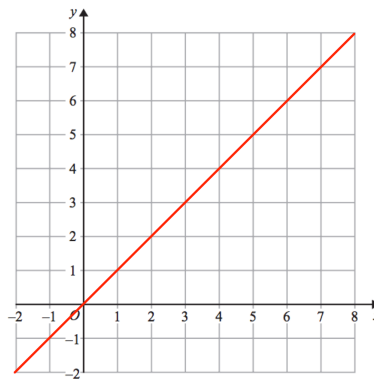
Workout

Question 1: Find the gradient of each of these lines

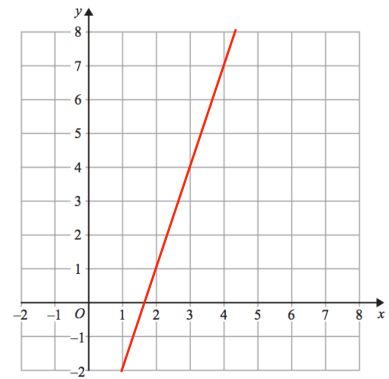
(a)



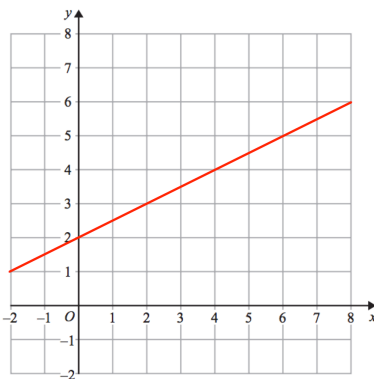
(b)



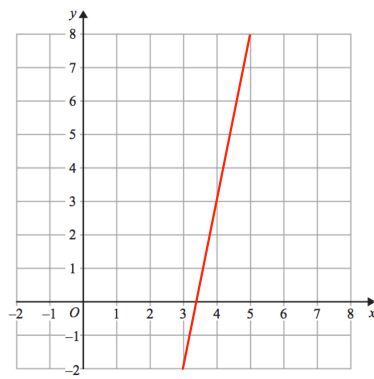
(c)



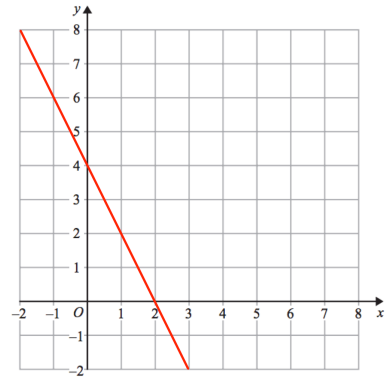
(d)



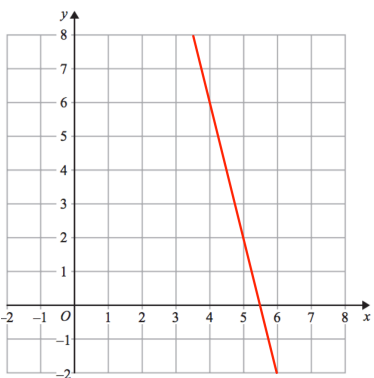
(e)



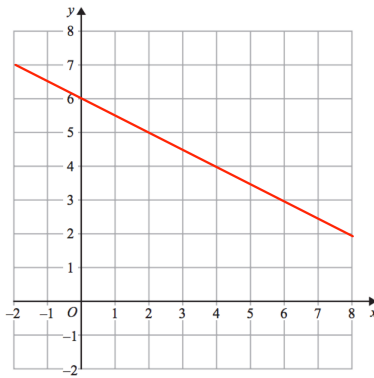
(f)



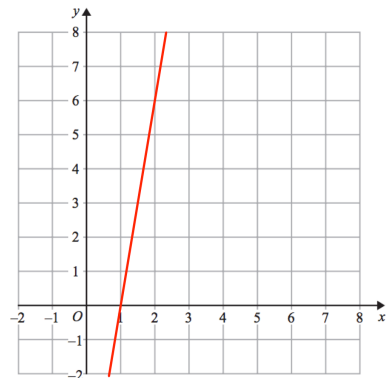
(g)



(h)

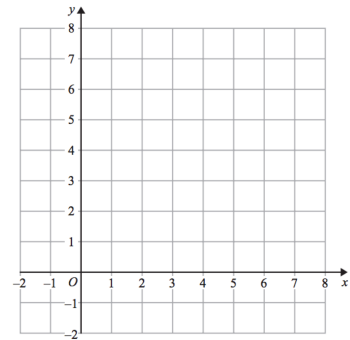


(i)



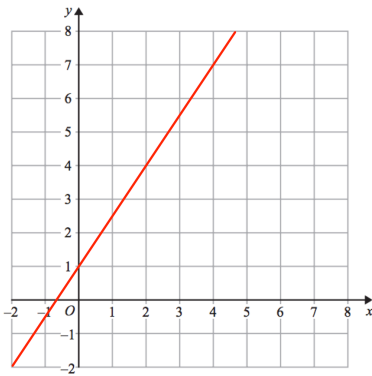
Question 2: Draw lines with the following gradients

- (a) 2 (b) 4 (c) 7 (d) -1
 (e) -3 (f) -5 (g) $\frac{1}{2}$ (h) 10

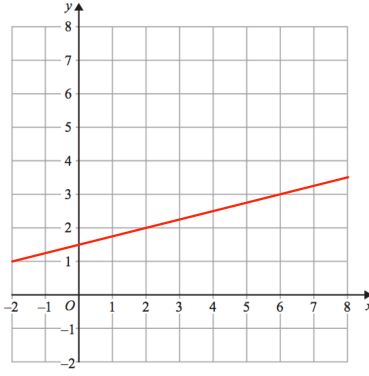


Question 3: Find the gradient of each of these lines

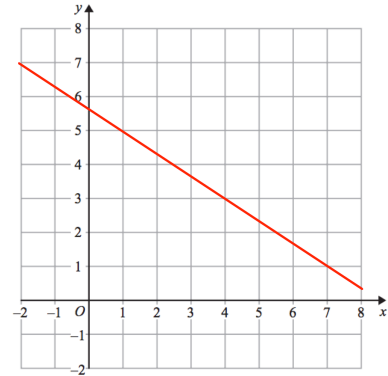
(a)



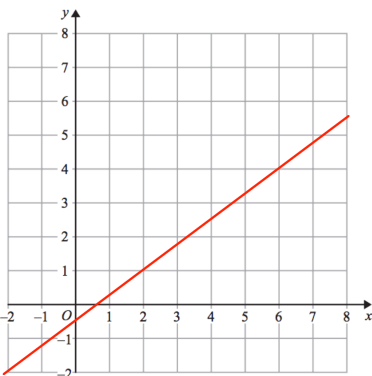
(b)



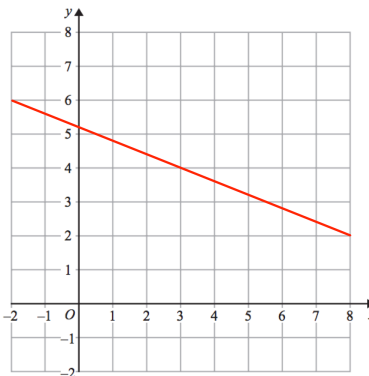
(c)



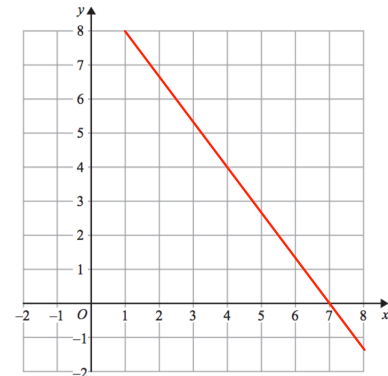
(d)



(e)

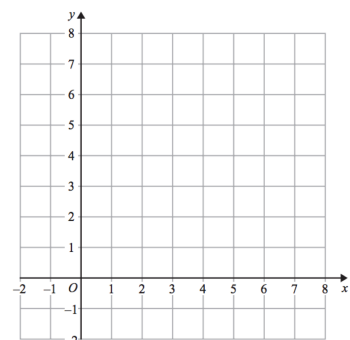


(f)



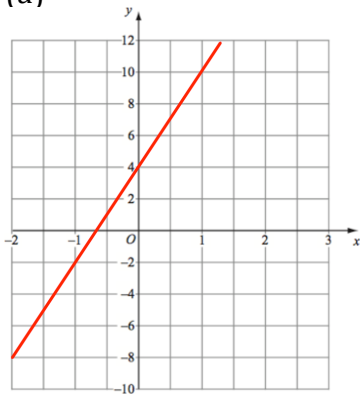
Question 4: Draw lines with the following gradients

- (a) $2\frac{1}{2}$ (b) $\frac{1}{3}$ (c) $\frac{1}{5}$ (d) $-\frac{1}{6}$
 (e) $\frac{3}{10}$ (f) $\frac{4}{5}$ (g) $1\frac{1}{3}$ (h) $-\frac{3}{5}$

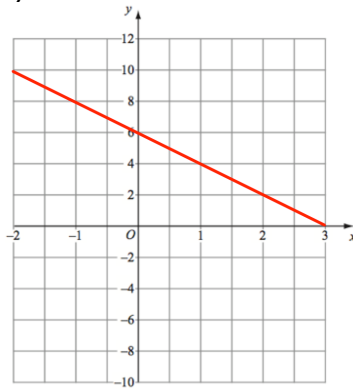


Question 5: Find the gradient of each of these lines

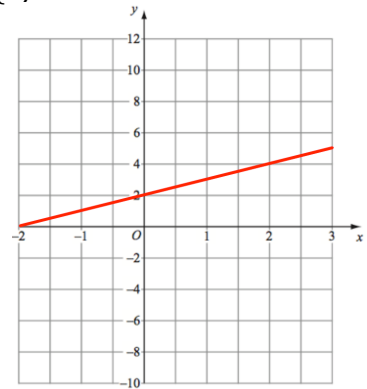
(a)



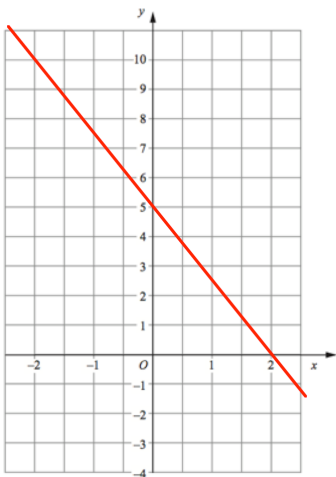
(b)



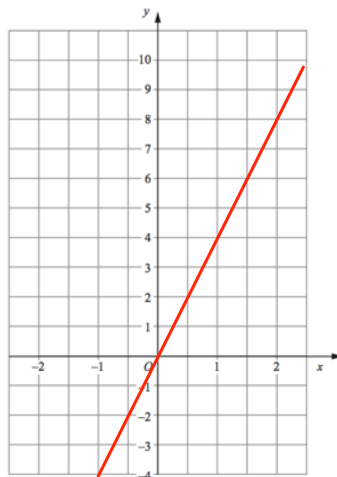
(c)



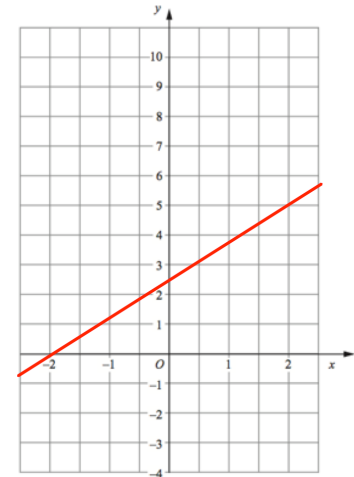
(d)



(e)

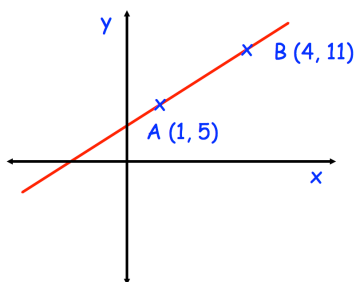


(f)

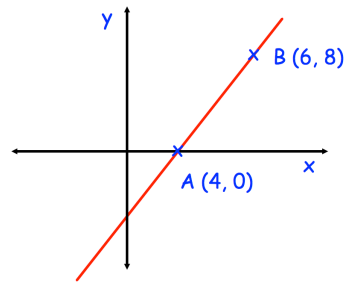


Question 6: Find the gradient of each line shown below

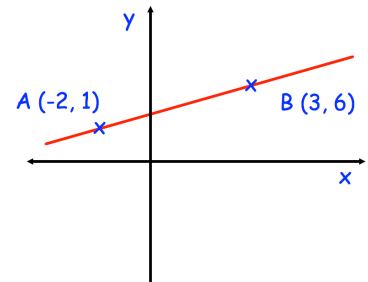
(a)



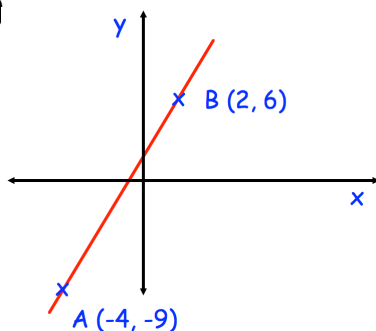
(b)



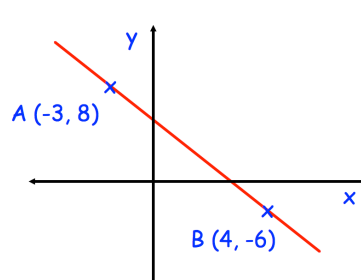
(c)



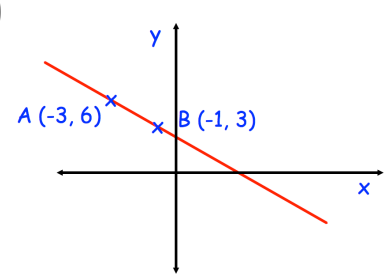
(d)



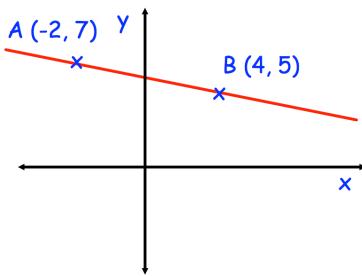
(e)



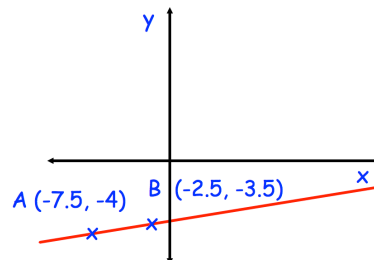
(f)



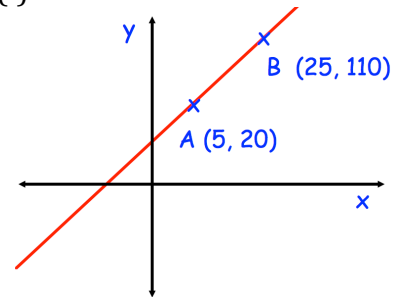
(g)



(h)



(i)

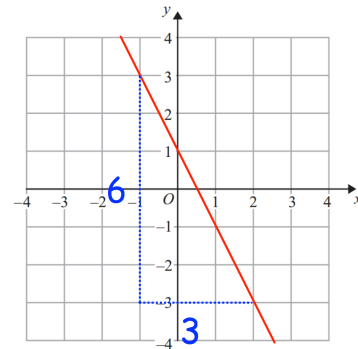


Question 7: Work out the gradient of the line passing through these pairs of points

- | | | |
|-------------------------|-------------------------|-----------------------------|
| (a) (1, 4) and (3, 10) | (b) (0, 0) and (3, 12) | (c) (5, -2) and (9, 14) |
| (d) (-8, 6) and (0, -2) | (e) (-5, -9) and (1, 3) | (f) (-7, -2) and (1, -4) |
| (g) (-2, 1) and (8, -7) | (h) (-2, 9) and (4, 7) | (i) (-4.5, 3) and (6, -7.5) |

Apply

Question 1: Alisha says that the gradient of the line is 2. Explain her mistake.



Question 2: Find the gradient of the line passing through the points $(4a, -a)$ and $(6a, 5a)$

Question 3: The line passing through $(5, -2)$ and $(8, c)$ has a gradient of 3. Find c .

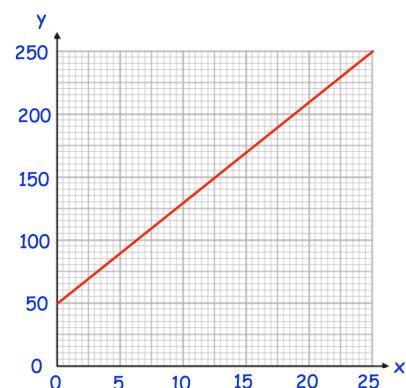
Question 4: The line passing through $(-8, -9)$ and $(-2, h)$ has a gradient of 4. Find h .

Question 5: The line passing through $(3, -4)$ and $(m, 10)$ has a gradient of 2. Find m .

Question 6: The line passing through $(-2, 5)$ and $(2, n)$ has a gradient of $-\frac{1}{2}$. Find n .

Question 7: The line passing through $(1, p)$ and $(5, 1)$ has a gradient of 0.75. Find p .

Question 8: Find the equation of the line shown



Gradient

Videos 189 and 190 on www.corbettmaths.com

Answers



Click here



Scan here