

Examples

Workout

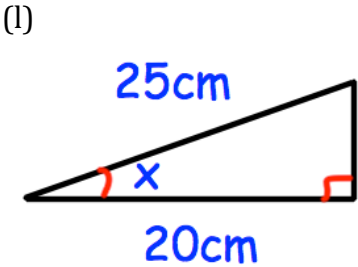
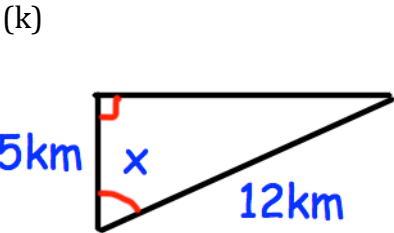
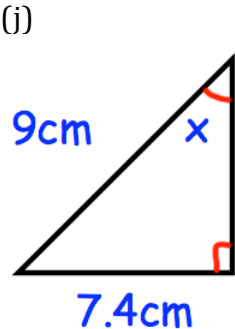
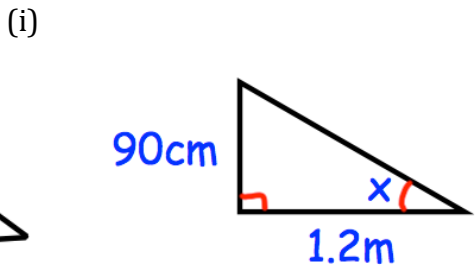
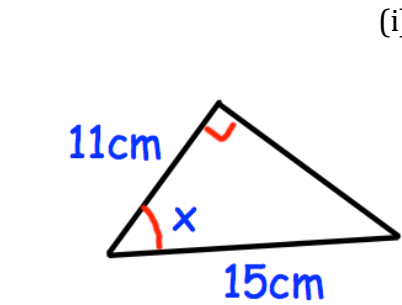
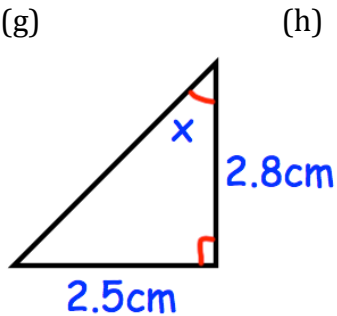
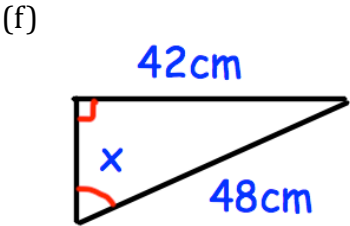
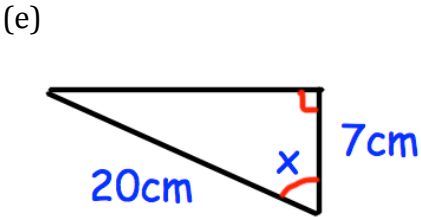
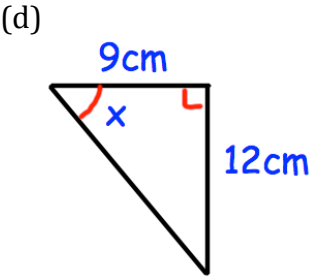
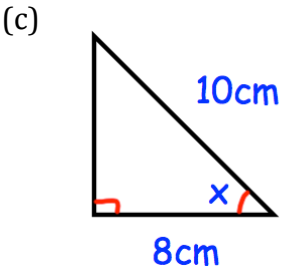
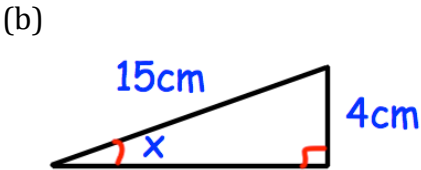
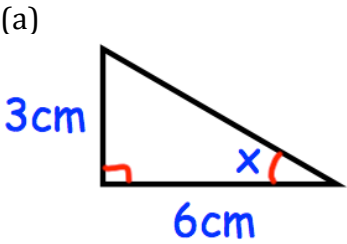


Click here



Scan here

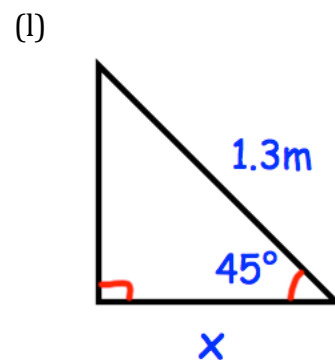
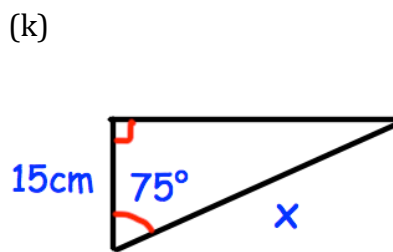
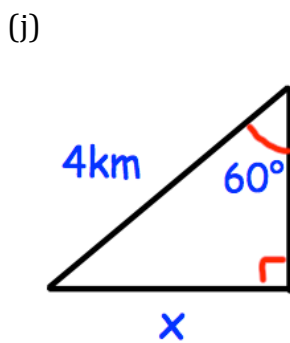
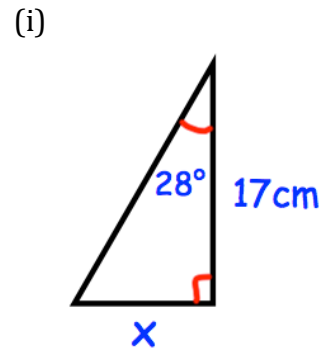
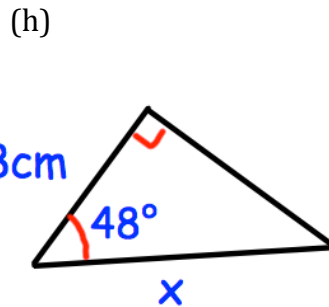
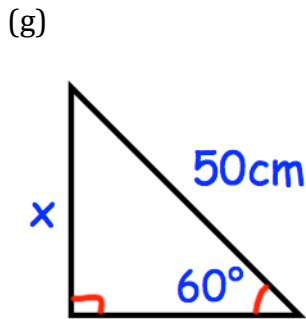
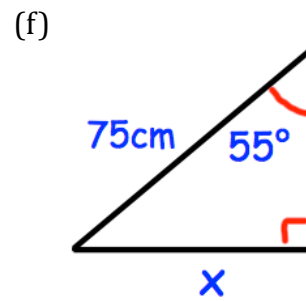
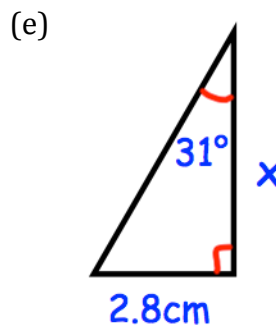
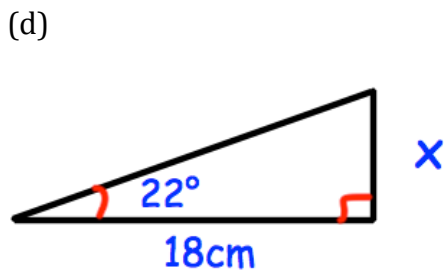
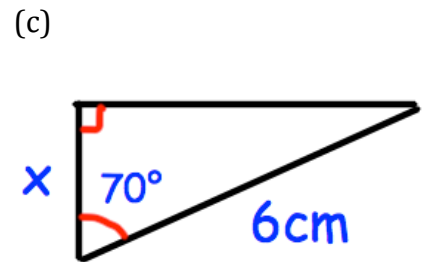
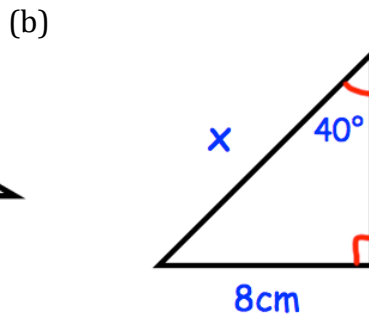
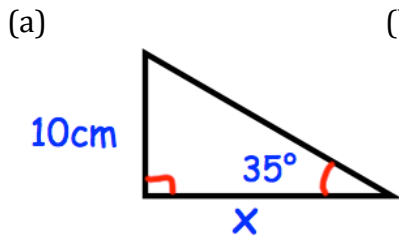
Question 1: Find the size of the missing angles in the triangles below.



Trigonometry

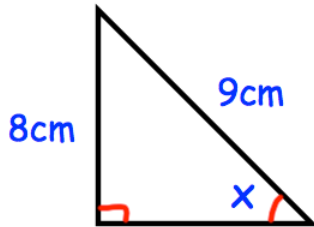
Video 329, 330, 331 on www.corbettmaths.com

Question 2: Find the lengths of the sides labelled x below.

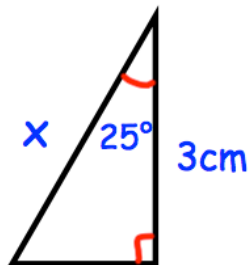


Question 3: Find the size of the missing angles/sides labelled x below.

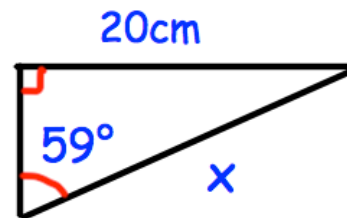
(a)



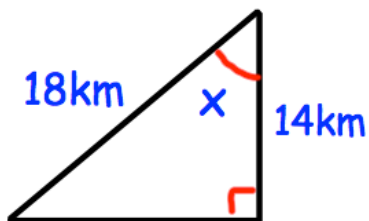
(b)



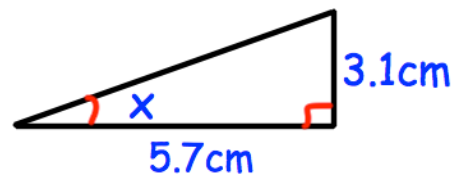
(c)



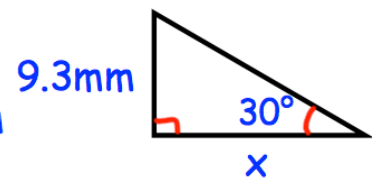
(d)



(e)



(f)



Apply

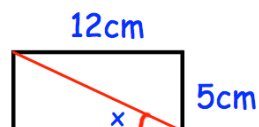
In each question, draw a diagram unless it has been given.

Question 1: A 4 metre long ladder is placed against a wall. The angle between the ladder and the ground is 75° . How far up the wall does the ladder reach?

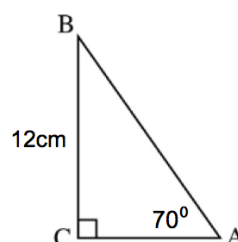
Question 2: A 5 metre long ladder is placed against a wall. It reaches 4.3 metres up the wall. What is the angle between the ladder and the ground?

Question 3: A ladder is placed against a wall. The base of the ladder is 4 foot from the bottom of the wall. The angle between the ladder and the ground is 80° . What is the length of the ladder?

Question 4: A rectangle is 12cm long and 5cm wide. Find the size of the angle marked x.



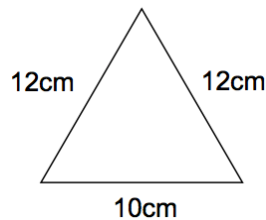
Question 5: (a) Find the length of AC.
(b) Find the length of AB.
(c) Find the perimeter of triangle ABC.
(d) Find the area of triangle ABC.



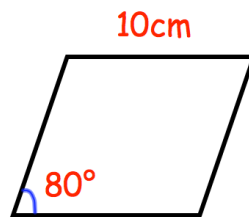
Trigonometry

Video 329, 330, 331 on www.corbettmaths.com

- Question 6: A helicopter leaves A and flies 40 miles due east. Then the helicopter flies 10 miles due south and arrives at B. Work out the bearing of B from A.
- Question 7: A boat leaves a port and sails 55km due west and then 30km due north and arrives at an oil rig. What is the bearing of the oil rig from the port?
- Question 8: Shown is an isosceles triangle. Calculate its area.

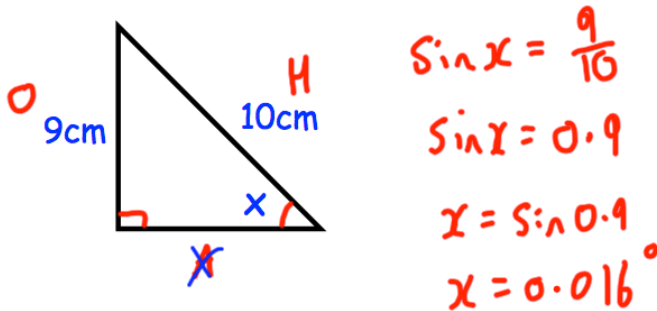


- Question 9: Shown is a rhombus of side length 10cm. Calculate its area.

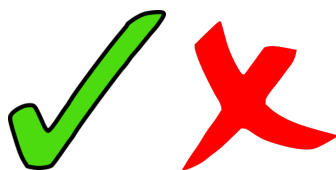


- Question 10: Can you spot any mistakes in the question below?

Find the size of the angle x.



Answers



Click here



Scan here