

Write your name here

Surname

Other names

Pearson Edexcel
International GCSE

Centre Number

--	--	--	--	--	--

Candidate Number

--	--	--	--	--	--

Further Pure Mathematics

Paper 1

Tuesday 12 June 2018 – Morning
Time: 2 hours

Paper Reference

4PM0/01**Calculators may be used.**

Total Marks

Instructions

- Use **black** ink or ball-point pen.
- **Fill in the boxes** at the top of this page with your name, centre number and candidate number.
- Answer **all** questions.
- Without sufficient working, correct answers may be awarded no marks.
- Answer the questions in the spaces provided
– *there may be more space than you need.*

Information

- The total mark for this paper is 100.
- The marks for **each** question are shown in brackets
– *use this as a guide as to how much time to spend on each question.*

Advice

- Read each question carefully before you start to answer it.
- Check your answers if you have time at the end.

Turn over ►

P53391A

©2018 Pearson Education Ltd.

1/1/1/



Pearson

Answer all ELEVEN questions.

Write your answers in the spaces provided.

You must write down all the stages in your working.

1

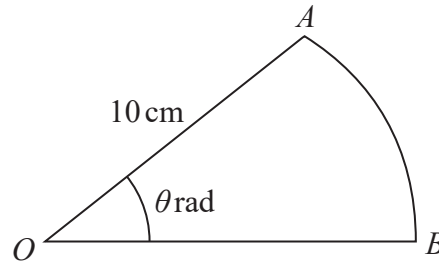


Diagram NOT accurately drawn

Figure 1

Figure 1 shows a sector OAB of a circle. The circle has centre O and radius 10 cm . The area of the sector is 25 cm^2 and angle $AOB = \theta$ radians.

Find

- (a) the value of θ , (2)

- (b) the length of the arc AB . (2)

.....

.....

.....

.....

.....

.....

.....

.....

.....

.....

.....

.....

.....

.....

.....

.....

.....

.....

.....

.....

.....

.....

2



DO NOT WRITE IN THIS AREA

DO NOT WRITE IN THIS AREA

DO NOT WRITE IN THIS AREA

Question 1 continued

DO NOT WRITE IN THIS AREA

DO NOT WRITE IN THIS AREA

DO NOT WRITE IN THIS AREA

Area with horizontal dotted lines for writing.

(Total for Question 1 is 4 marks)



2 The equation $3x^2 - 5x + 4 = 0$ has roots α and β .

Without solving this equation, form a quadratic equation with integer coefficients that has roots

$$\alpha + \frac{1}{2\beta} \text{ and } \beta + \frac{1}{2\alpha}$$

(7)

DO NOT WRITE IN THIS AREA

DO NOT WRITE IN THIS AREA

DO NOT WRITE IN THIS AREA



Question 2 continued

DO NOT WRITE IN THIS AREA

DO NOT WRITE IN THIS AREA

DO NOT WRITE IN THIS AREA

Area with horizontal dotted lines for writing.

(Total for Question 2 is 7 marks)



3 In triangle ABC , $AB = 12$ cm, $BC = 9$ cm and angle $BAC = 42^\circ$

(a) Find, in degrees to the nearest 0.1° , each of the two possible sizes of angle ABC . (5)

(b) Find, to 2 significant figures, the smaller of the two possible areas of triangle ABC . (3)

Area with horizontal dotted lines for writing answers.

DO NOT WRITE IN THIS AREA

DO NOT WRITE IN THIS AREA

DO NOT WRITE IN THIS AREA



Question 3 continued

DO NOT WRITE IN THIS AREA

DO NOT WRITE IN THIS AREA

DO NOT WRITE IN THIS AREA

Area with horizontal dotted lines for writing.

(Total for Question 3 is 8 marks)



4

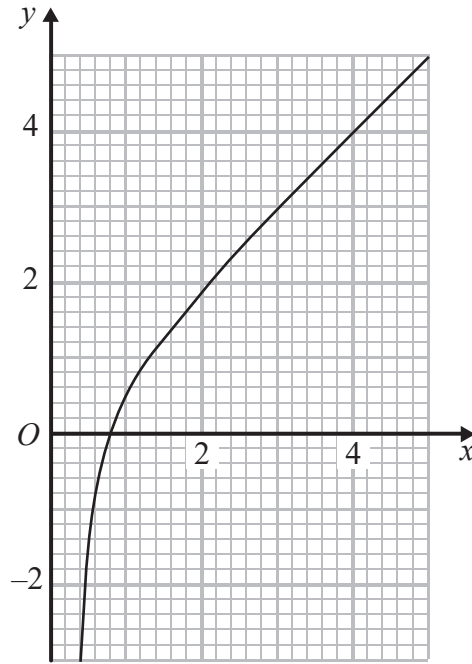


Figure 2

Figure 2 shows the graph of $y = x - \frac{1}{2x^2}$ for $0.4 \leq x \leq 5$ drawn on a grid.

(a) (i) Express $x - \frac{1}{2x^2}$ as a single fraction.

(ii) Hence use the graph to obtain, to one significant figure, an estimate for the value of $\sqrt[3]{0.5}$

(3)

(b) By drawing a suitable straight line on the grid, find an estimate to 2 significant figures, for the root of the equation

$$4 - 2x + \frac{1}{2x^2} = 0$$

in the interval $0.4 \leq x \leq 5$

(3)

.....

.....

.....

.....

.....

.....



DO NOT WRITE IN THIS AREA

DO NOT WRITE IN THIS AREA

DO NOT WRITE IN THIS AREA

Question 4 continued

DO NOT WRITE IN THIS AREA

DO NOT WRITE IN THIS AREA

DO NOT WRITE IN THIS AREA

Area with horizontal dotted lines for writing.

(Total for Question 4 is 6 marks)



Question 5 continued

DO NOT WRITE IN THIS AREA

DO NOT WRITE IN THIS AREA

DO NOT WRITE IN THIS AREA

Area with horizontal dotted lines for writing.

(Total for Question 5 is 8 marks)



P 5 3 3 9 1 A 0 1 1 3 6

Question 6 continued

DO NOT WRITE IN THIS AREA

DO NOT WRITE IN THIS AREA

DO NOT WRITE IN THIS AREA

A large rectangular area with rounded corners, containing numerous horizontal dotted lines for writing.



P 5 3 3 9 1 A 0 1 3 3 6

Question 6 continued

Area for writing answers, consisting of multiple horizontal dotted lines.

DO NOT WRITE IN THIS AREA

DO NOT WRITE IN THIS AREA

DO NOT WRITE IN THIS AREA



Question 6 continued

DO NOT WRITE IN THIS AREA

DO NOT WRITE IN THIS AREA

DO NOT WRITE IN THIS AREA

Area with horizontal dotted lines for writing.

(Total for Question 6 is 7 marks)



P 5 3 3 9 1 A 0 1 5 3 6

Question 7 continued

DO NOT WRITE IN THIS AREA

DO NOT WRITE IN THIS AREA

DO NOT WRITE IN THIS AREA

Area with horizontal dotted lines for writing.



P 5 3 3 9 1 A 0 1 7 3 6

Question 7 continued

Area for writing answers, consisting of multiple horizontal dotted lines.

DO NOT WRITE IN THIS AREA

DO NOT WRITE IN THIS AREA

DO NOT WRITE IN THIS AREA



Question 7 continued

DO NOT WRITE IN THIS AREA

DO NOT WRITE IN THIS AREA

DO NOT WRITE IN THIS AREA

Area with horizontal dotted lines for writing.

(Total for Question 7 is 9 marks)



P 5 3 3 9 1 A 0 1 9 3 6

Question 8 continued

DO NOT WRITE IN THIS AREA

DO NOT WRITE IN THIS AREA

DO NOT WRITE IN THIS AREA

Area with horizontal dotted lines for writing.



P 5 3 3 9 1 A 0 2 1 3 6

Question 8 continued

Area with horizontal dotted lines for writing.

DO NOT WRITE IN THIS AREA

DO NOT WRITE IN THIS AREA

DO NOT WRITE IN THIS AREA



Question 8 continued

DO NOT WRITE IN THIS AREA

DO NOT WRITE IN THIS AREA

DO NOT WRITE IN THIS AREA

Area with horizontal dotted lines for writing.

(Total for Question 8 is 10 marks)



P 5 3 3 9 1 A 0 2 3 3 6

Question 9 continued

DO NOT WRITE IN THIS AREA

DO NOT WRITE IN THIS AREA

DO NOT WRITE IN THIS AREA

Area with horizontal dotted lines for writing.



Question 9 continued

Area for writing answers, consisting of multiple horizontal dotted lines.

DO NOT WRITE IN THIS AREA

DO NOT WRITE IN THIS AREA

DO NOT WRITE IN THIS AREA



Question 9 continued

DO NOT WRITE IN THIS AREA

DO NOT WRITE IN THIS AREA

DO NOT WRITE IN THIS AREA

Area with horizontal dotted lines for writing.

(Total for Question 9 is 11 marks)



P 5 3 3 9 1 A 0 2 7 3 6

Question 10 continued

DO NOT WRITE IN THIS AREA

DO NOT WRITE IN THIS AREA

DO NOT WRITE IN THIS AREA

Area with horizontal dotted lines for writing.



P 5 3 3 9 1 A 0 2 9 3 6

Question 10 continued

Area with horizontal dotted lines for writing.

DO NOT WRITE IN THIS AREA

DO NOT WRITE IN THIS AREA

DO NOT WRITE IN THIS AREA



Question 10 continued

DO NOT WRITE IN THIS AREA

DO NOT WRITE IN THIS AREA

DO NOT WRITE IN THIS AREA

Area with horizontal dotted lines for writing.

(Total for Question 10 is 16 marks)



P 5 3 3 9 1 A 0 3 1 3 6

11

Diagram NOT accurately drawn

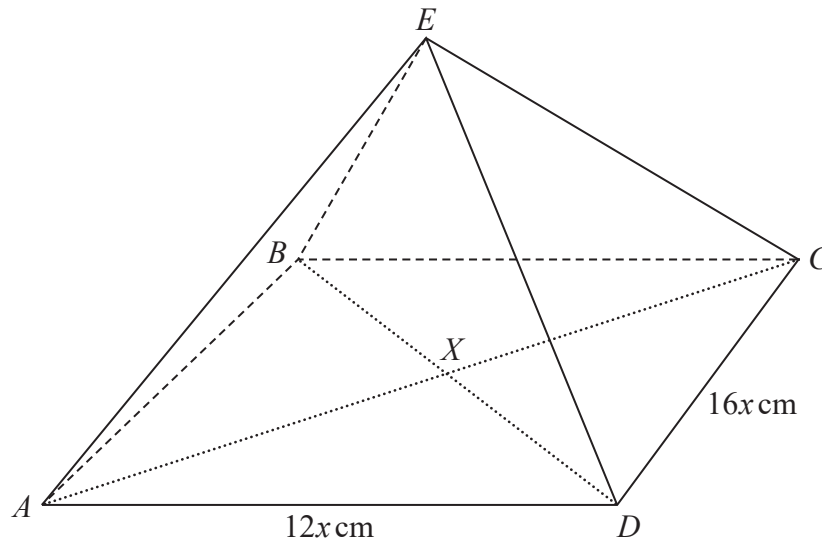


Figure 3

Figure 3 shows the right pyramid $ABCDE$. The base of the pyramid, $ABCD$, is a rectangle with $CD = 16x$ cm and $AD = 12x$ cm. The diagonals of the base intersect at the point X . The edges EA , EB , EC and ED are all of equal length. The size of the angle between EA and the base $ABCD$ is 45°

Find, in terms of x ,

- (a) the height, EX , of the pyramid, (3)
- (b) the length of EA . (2)

Find, in degrees to the nearest 0.1° , the size of

- (c) the acute angle between the planes AEB and $ABCD$, (3)
- (d) the acute angle between the planes BED and AEC . (3)

The area of triangle AED is 250 cm^2

- (e) Find, to 4 significant figures, the value of x . (3)

.....

.....

.....

.....

.....

.....

.....

DO NOT WRITE IN THIS AREA

DO NOT WRITE IN THIS AREA

DO NOT WRITE IN THIS AREA



Question 11 continued

DO NOT WRITE IN THIS AREA

DO NOT WRITE IN THIS AREA

DO NOT WRITE IN THIS AREA

Area with horizontal dotted lines for writing.



P 5 3 3 9 1 A 0 3 3 3 6

Question 11 continued

Handwriting practice area consisting of 25 horizontal dotted lines.

DO NOT WRITE IN THIS AREA

DO NOT WRITE IN THIS AREA

DO NOT WRITE IN THIS AREA



Question 11 continued

DO NOT WRITE IN THIS AREA

DO NOT WRITE IN THIS AREA

DO NOT WRITE IN THIS AREA

Area with horizontal dotted lines for writing.



P 5 3 3 9 1 A 0 3 5 3 6

